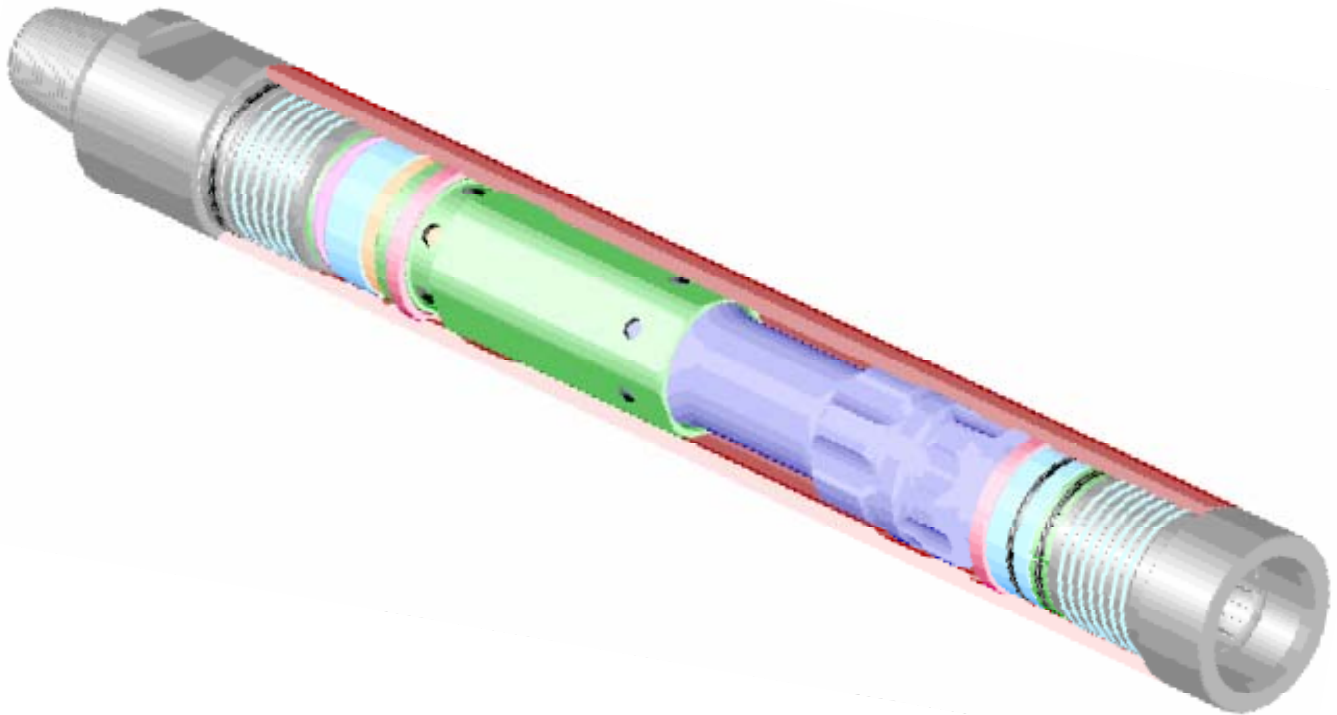




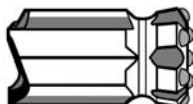
Rock Hog[®] Drilling Products, Inc.

**RH65QHP
DTH HAMMERS
REGULAR & HEADY DUTY MODELS
OPERATION & MAINTENANCE MANUAL**

MANUAL No HW-49026



Pacific Bit
of Canada Inc.



Unit 204, 9485 – 189 Street, Surrey, B.C. V4N 5L8
Phone 604 513 4292 • Toll Free 1 877 511 4292
Fax 604 513 4291 • Website www.pacific-bit.com

Table of Contents

SECTION 1. GENERAL INFORMATION	2
1.1 Description.....	2
1.3 Air Supply.....	2
1.4 Unpacking a New Hammer	2
SECTION 2. HAMMER OPERATION.....	3
2.1 Lubrication of Internal Parts	3
2.2 Lubrication of Threaded Connections	3
2.3 Hole Cleaning	3
2.4 Setting the Choke	3
2.5 Effect of Elevation.....	4
2.6 Water Injection.....	4
2.7 Drilling Under Water	4
2.8 Drill Pipe/Changing Pipe.....	4
2.9 Installing the Bit.....	4
2.10 Connect the Hammer	4
2.11 Drilling	4
2.12 The Drill Bit	5
2.13 Breaking Threads Loose.....	5
2.14 Monitoring.....	5
2.15 Storage.....	6
SECTION 3. MAINTENANCE	7
3.1 Schedule.....	7

Pacific Bit of Canada Inc.

Unit 204, 9485 – 189 Street, Surrey, B.C. V4N 5L8

Phone 604 513 4292 • Toll Free 1 877 511 4292

Fax 604 513 4291 • Website www.pacific-bit.com

3.2 Disassembly	7
3.3 Inspection	8
3.4 Assembly	10
SECTION 4. PARTS BREAKDOWN.....	13
Exploded View, model RH65Q1HP.....	13
Assembled View	13
Part List.....	14
SECTION 5. TROUBLE SHOOTING.....	15

Section 1. General Information

1.1 Description

The RH65HP hammer is a valveless pneumatic percussion hammer for drilling in all rock formations. It is designed for blast holes and construction when drilling 6-1/2" to 7-1/2" holes. The 65HP incorporates one moving part, the piston, making the hammer very reliable. The HP hammer is designed with a more efficient air cycle for improved performance. All external parts are hardened to resist wear while all critical internal parts are also hardened for maximum service life. The simple design also makes the hammer easy to maintain and service. The heavy duty model has a heavier wall for extended service life in high abrasion applications.

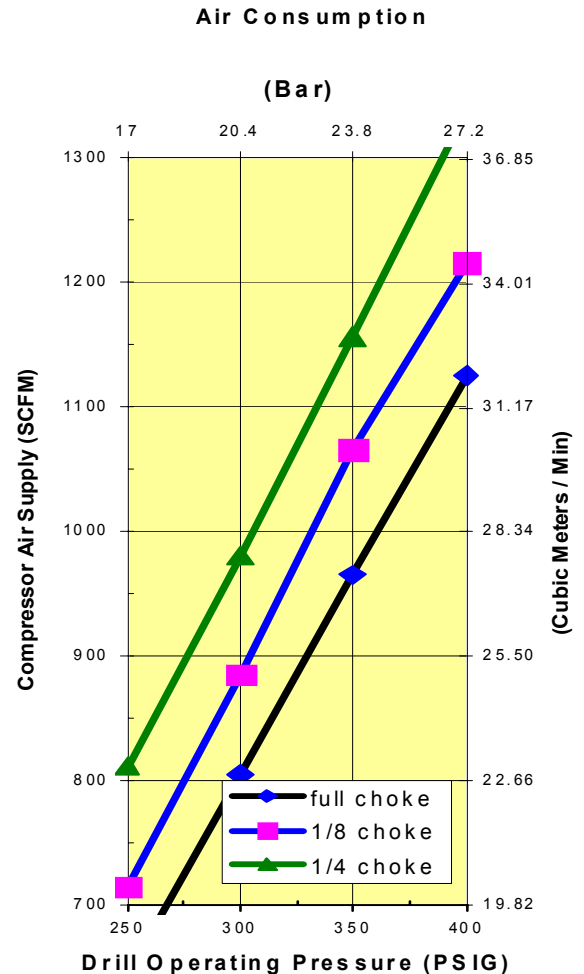
1.2 SPECIFICATIONS

	English	Metric
Outside Dia		
Regular Model	5.75 in	146 mm
Heavy Duty Model	5.90 in	150 mm
Overall Length Without Bit	46.8 in	1189 mm
Operating Length API shoulder to Bit Face	47.2 in	1198 mm
Total Weight		
Regular Model	251 lbs	114 kg
Heavy Duty Model	269 lbs	122 kg
Bore Size	4.75 in	121 mm
Piston Weight	45 lbs	20.4 kg
Drillpipe Connect	3-1/2 Reg API Pin Up others available upon request	
Wrench Flats	4 in	102 mm
Hole Size Range	6-1/2 in to 8-1/2 in	
Bit Shank Required	QL6, with flared skirt	
Minimum Air Volume Required	900 cfm	25 cmm
Maximum Operating Pressure All Models	380 psi	25.8 bar

1.3 Air Supply

A minimum of 900 cfm is recommended to be supplied to the hammer up to air supplies of 1250 cfm.. The hammer will function on lower supplies but the penetration rate will be slower. For the fastest possible penetration, the hammer should be operated at the highest obtainable pressure for the given air supply. A

maximum pressure of 380 psi is recommended. Operating at pressures over 380 psi will increase penetration rates but shorten the service life of internal hammer parts and the bits. The chart below shows the hammers operating pressure for a given air volume supply based on operation at sea level. If a large air volume is supplied, the choke will need to be opened to maintain the 380 max psi. The choke adjustment is explained in section 2.4



1.4 Unpacking a New Hammer

First make note of the hammer Part Number & Serial Number found on the ID label outside of the hammer shipping tube and also on the wearsleeve of the hammer. Your Rock Hog representative will need these numbers if you have questions on the hammer. The 12-digit hammer serial number is the backhead & air distributor numbers put together.

Once the hammer has been unpacked, locate and remove the plastic bag attached to the backhead. This bag contains 2 optional chokes. Keep these chokes for possible future use.

Pacific Bit of Canada Inc.

Unit 204, 9485 – 189 Street, Surrey, B.C. V4N 5L8
 Phone 604 513 4292 • Toll Free 1 877 511 4292
 Fax 604 513 4291 • Website www.pacific-bit.com

Section 2. Hammer Operation

2.1 Lubrication of Internal Parts

The hammer must have a constant and adequate supply of oil to prevent part wear, corrosion, and failure. Rock Hog recommends Exxon AROX EP series, Chevron VISTAC series or an equivalent grade. Contact your local lubricant representative for the proper grade to use for your drilling environment and temperatures.

Make sure the oil injector is filled and working properly. Always verify that there is oil coming through the drill string, **DO NOT RUN THE HAMMER WITHOUT CONSTANT OIL INJECTION! THE HP HAMMERS REQUIRE MORE OIL THAN THEIR PREDECESSORS.**

Set the system to inject 1.3 pints per hour for every 300 cfm of air supply. Example, if the supply is 950 cfm, inject $950/300 \times 1.3 = 4.2$ pints per hour. Again this is more oil than the older models.

Oil Properties			
Exxon APOX Grade	EP 46	EP 150	EP 320
Chevron VISTAC Grade	ISO46	ISO 150	ISO 320
When to use	winter	summer	summer, production drilling
ISO viscosity grade	46	150	320
SAE viscosity grade	20W-20	30	50
Viscosity			
cSt @ 40°C, ASTM D 445	44	144	310
cSt @ 100°C	6	14	22
SUS @ 100°F, ASTM D 2161	228	755	1660
SUS @ 210°F	48	75	112
Flash Point			
°C	210	220	220
°F	410	450	450

2.2 Lubrication of Threaded Connections

All threaded connection must be coated with a no-gall grease. Both the backhead and chuck thread into the wear sleeve. The hammer is shipped with grease on both these connections. All drill pipe connections must also be coated. **When applying grease, be careful not to put grease where it will enter the air stream. The grease will not blow through the**

hammer but stick to the internal parts. Excessive grease in the hammer will close the airways and stop the hammer.

Use a high performance copper based grease. Rock Hog recommends its own Rock Hog Thread Grease. Ask your Rock Hog representative for part number 350010.

2.3 Hole Cleaning

For proper hole cleaning, verify that an adequate up-hole air velocity can be obtained. An annular velocity of 3000 feet-per-minute or more is required. Use this formula to check what the velocity will be:

$$\text{Velocity (fpm)} = \frac{(183) \times (\text{supply CFM})}{(\text{bit size})^2 - (\text{drill pipe size})^2}$$

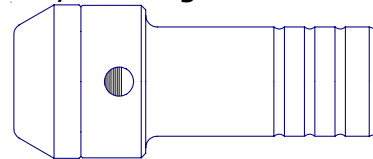
2.4 Setting the Choke

The choke is used to match the hammers operating pressure to the air supply. The hammer is shipped with a full choke installed. Two optional open chokes are shipped with the hammer.

For top performance, the operating pressure should be set at the compressor's rated output. The maximum recommended operating pressure should not exceed 380 psi even if the compressor is rated over 380 psi. Operating over 380 will increase penetration rates but reduce service life.

An open choke creates a controlled air leak in the hammer while the full choke allows no air leak. The larger the choke opening the greater the volume of lost air, the lower the hammer operating pressure.

To determine what choke should be in the hammer, plot your air supply, cfm & psi, on the chart in Section 1.3. From this point, move straight up the chart. The 1st choke line reached is the choke that should be used. The hammer is supplied with the full choke installed. To change the choke, remove the backhead, pull out the check valve and with a hammer and punch, drive out the current choke and drive in the needed choke. **On open chokes, the flat goes toward the bit.**



The actual operating pressure of your hammer may vary from the chart in Section 1.3 due to elevation from sea level (see section 2.5), leaks in the air supply line, and actual compressor output compared to its rating.

It is possible to fine-tune the choke opening if needed. If the full choke is in and the operating pressure is below the compressor's rated output, the

Pacific Bit of Canada Inc.

Unit 204, 9485 – 189 Street, Surrey, B.C. V4N 5L8
 Phone 604 513 4292 • Toll Free 1 877 511 4292
 Fax 604 513 4291 • Website www.pacific-bit.com

only way to increase the operating pressure is to increase the air volume supply. If a factory supplied open choke is being used and the operating pressure is below the compressor's rated output, it is possible to bring the operating pressure up to the rating by taking the full choke and making a flat on it that is smaller than the current open choke.

2.5 Effect of Elevation

Elevation above sea level affects the compressor output. As elevation increases, the compressor's volume output decreases. Use the table below to determine volume loss.

Elevation Correction Factor	
Actual Compressor Output = Rated Output x ECF	
Elevation in Feet	ECF
4000	0.86
5000	0.82
6000	0.79
7000	0.76
8000	0.73
9000	0.70
10000	0.68
11000	0.65
12000	0.63
13000	0.61
14000	0.59
15000	0.57

2.6 Water Injection

Injecting water into the air supply is a common practice to keep down dust and to improve hole cleaning in soft formations. **ALWAYS USE A CLEAN SUPPLY OF WATER.**

Water injection will increase the hammer operating pressure but reduce the service life of the internal parts. Therefore, use just enough water for the drilling conditions present.

When drilling is complete, always shut off the water and blow air and oil through the drill string to remove the water and coat internal surfaces with oil. This will help prevent surface corrosion of the steel.

2.7 Drilling Under Water

The hammer is equipped with a check valve that closes when the air supply is shut off. This maintains air pressure inside the hammer and prevents water from coming up into the hammer.

Drilling under water increases the backpressure. The higher the head of water the greater the backpressure, the slower the hammer will penetrate. A point can be reached where the up-hole velocity is insufficient to overcome the water head and the piston will stop. When needed, performance can be improved by opening the choke. This diverts air from the piston to help blow the water out of the hole.

2.8 Drill Pipe/Changing Pipe

Drill pipe must be kept clean and straight. Dirt and rust blown out of the drill pipe and into the hammer will damage the hammer's internal parts. **Always cover the hole in the drill pipe when doing a pipe change. Always blow out the pipe before connecting it to the drill string. Never allow dirt to fall into the open hole.**

2.9 Installing the Bit

The bit can be installed into the hammer on or off the rig. Remove the chuck then the bit retainer ring. Apply a coating of no-gall grease to the bit splines. Set the chuck down over the bit shank. Pull the two halves of the ring apart and put the ring down over the shank. Put the halves together and set the ring on the chuck. Coat the threads with no-gall grease. Thread the chuck back into the wear sleeve.

2.10 Connect the Hammer

If the hammer is new, take a clean rod and push the check valve open and pour about a pint of rock drill oil down the center hole in the backhead.

Once on the rig, tighten both the chuck and backhead before starting the hammer. When tight, there should be no gap between the chuck & sleeve shoulders and between the backhead & sleeve shoulders. **ALWAYS USE A WRAP-AROUND WRENCH TO GRIP THE WEAR SLEEVE.**

Once the hammer is connected, check the travel of the bit. In the drilling position, the bit should shoulder on the chuck and when the hammer is pulled up, the bit should drop out 1.7" (43mm).

2.11 Drilling

With the hammer/bit up off the bottom of the hole, supply air to the hammer. The air will blow through the hammer but the piston will not cycle. This allows for continuous blowing to clean out the hole when needed.

Start rotation of the drill string and lower the hammer/bit onto the bottom of the hole. As the bit pushes into the hammer, the piston will begin to cycle and the pressure will build to its normal operating level.

Pacific Bit of Canada Inc.

Unit 204, 9485 – 189 Street, Surrey, B.C. V4N 5L8
 Phone 604 513 4292 • Toll Free 1 877 511 4292
 Fax 604 513 4291 • Website www.pacific-bit.com

Once a consistent formation is being drilled, set the rotation speed and hold down pressure. As a starting point, use a rotation speed in revolutions per minute (RPM) of:

$$\text{RPM} = 154 / \text{bit size (in inches)}$$

Set the hold down weight on the bit. As a starting point, the weight should be 2000 lb to 3000 lb. Keep in mind that as the hole goes deeper, the weight on the bit increases. Eventually hold back is needed to keep excessive weight off the bit.

Only driller experience will determine what RPM and bit weight combination work best in a given formation. In general, too slow a RPM results in slow penetration and shortened bit life but too fast a RPM will also shorten bit life. Excessive weight on the bit will cause bit button failure. Insufficient weight causes the piston blow energy to be dissipated into the bit and piston, which will lead to steel failure of these parts.

2.12 The Drill Bit

A quality Rock Hog hammer requires a quality bit. Rock Hog recommends using the proven Rock Hog line of DTH bits. A full range of sizes and face styles are available through your Rock Hog representative.

The bit is what carries the hammer piston energy to the rock therefore the condition the bit cutting face should be checked after the completion of each hole drilled.

As the bit accumulates drill time, the buttons and steel will start to show a wear pattern. The pattern and rate of wear will vary greatly depending on the formation being drilled.

In soft formations such as limestone where the bit wears slowly, watch the buttons for "snakeskin" on the surface. These surface cracks must be ground off to prevent button failure.

In hard formations where the bit wears quickly, watch the size of the flats on the buttons. The buttons should be sharpened when the width of the flat is no wider than 1/2 the diameter to help prevent bit failure.

Some formations wash the steel away quickly. In this case the buttons start to protrude excessively. The buttons need to be ground down to prevent them from breaking off.

Dull buttons are the single biggest contributor to slowed penetration and excessive stress to the bit and hammer.

If a bit must be changed before a hole is complete, make sure the gage diameter of the bit used to complete the hole is no larger than the bit just

removed. Using a larger bit will result in probable lost of the gage buttons before the bit reaches the bottom of the hole. For this reason, always keep 1 or 2 worn bits that are in good condition on the drill rig.

2.13 Breaking Threads Loose

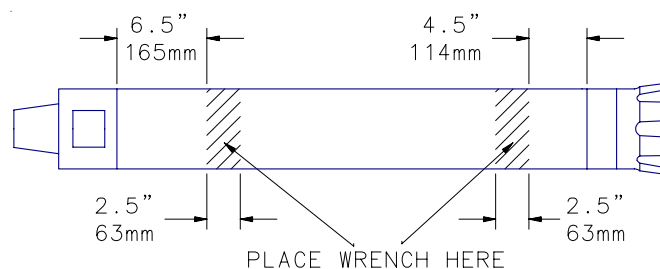
When breaking the chuck thread loose to change bits, or the backhead loose to do hammer maintenance, follow these guidelines:

ALWAYS USE A WRAP-AROUND WRENCH this is to prevent pinching the sleeve out-of-round

KEEP SHARP JAWS IN THE WRENCH the wear sleeve is very hard to give a long service life so only quality hardened or diamond-tipped jaws in good condition will grip the sleeve

DO NOT WELD ON THE SLEEVE welding on the hardened sleeve will crack the sleeve and voids any warranty on the sleeve.

PLACE THE WRENCH AS SHOWN BELOW



2.14 Monitoring

As the hammer accumulates drill time, these areas need to be monitored to determine when to service the hammer.

External surfaces: Rock Hog hammer parts are made from the best materials and hardened for long life but eventually these surfaces will wear away. The rate of wear depends on the formation being drilled, drilling speed and airflow. Make periodic checks to know what condition the parts are in.

Normally the chuck wears out first. Check the wall thickness on the bit shoulder end. When it measures 5/16" (8mm) or less at any point, replace the chuck. The service life of the chuck also heavily depends on the condition of the drill bit.

The wear sleeve will normally wear more on the chuck end. When the outside diameter reaches 5-3/8" (136mm), flip the sleeve. Once either end has worn down to a 5-1/4" (133mm) diameter, replace the sleeve. The service life of the sleeve also heavily depends on the condition of the chuck.

Pacific Bit of Canada Inc.

Unit 204, 9485 – 189 Street, Surrey, B.C. V4N 5L8
Phone 604 513 4292 • Toll Free 1 877 511 4292
Fax 604 513 4291 • Website www.pacific-bit.com

Chuck splines: check the condition of the chuck splines each time the bit is removed. **Do not put a chuck with badly worn splines on a new bit.**

Shoulder Gap: a hand-tight backhead will not be seated on the sleeve. Once the backhead is torqued down, this gap will close and the backhead will seat on the sleeve. This clamps the internal parts to prevent part movement. Periodically check the gap between the sleeve and hand-tight backhead. If the gap falls below .08" (2.0mm), refer to Section 3.4-step 11.

Operating pressure: this is the best way to know what condition the internal parts are in. As internal parts wear, the operating pressure, and therefore the penetration rate, will drop. Only the operator can say when hammer performance has dropped below an acceptable level at which time the hammer must be serviced. If the pressure goes up after the hammer has been in service for some time, this would indicate the piston is sticking or the air passages inside the hammer are becoming restricted.

2.15 Storage

Overnight

When drilling is complete for the day, shut off water and any other injections except the oil and allow air and oil only to blow through the hammer for a minute or two. This will blow out most of the water and other injections and coat all the internal parts with oil. **If the hammer is in a wet hole, bring the hammer above the water level before blowing it out.**

Short term

If the hammer will be off the rig for no more than 3 weeks, blow air and oil only through the hammer for a minute or two before taking it off the rig. This will blow out most of the water and other injections and coat all the internal parts with oil. Store that hammer in a dry area with the ends covered. The storage area should have a steady temperature to prevent surface condensation during temperature swings.

Long term

A used hammer going into storage for a month or more should be torn down with all parts cleaned, dried, oiled and stored assembled or disassembled in a dry, steady temperature area. This is to prevent surface corrosion.

Surface corrosion is a main cause of part failure in hammers.

Section 3. Maintenance

3.1 Schedule

If the need for service defined in Monitoring, section 2.14, is not reached first, follow these guidelines for servicing the hammer:

When the hammer is operated to the parameters defined in section 2 in formations up to what is considered "hard", perform service every 25000 feet (7600 meters) of drilling.

When water injection & drilling foams are used extensively, perform service every 18000 feet (5500 meters).

When drilling in "very hard" formations or when drilling under heavy mud, perform service every 10000 feet (3000 meters)

When injecting agents that are corrosive to metal, like potash to coat the hole wall, clean the hammer at completion of the job.

Use this as a starting point. Keep a log of service done-vs.-footage drilled. This will help refine the service schedule to fit your operation.

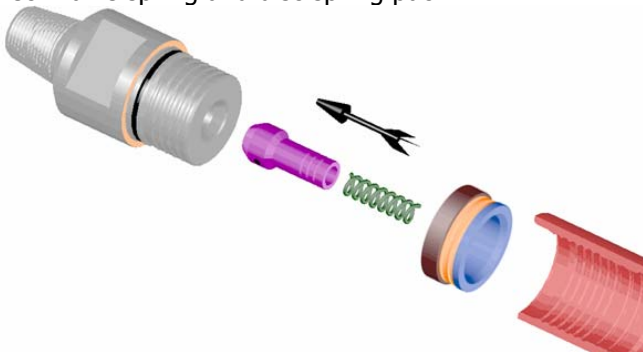
3.2 Disassembly

All parts are a sliding or clearance fit inside the hammer but may be held by a retainer ring or may be tight inside the hammer depending on the condition of the parts and the time period since the hammer was last serviced.

1. Break both the backhead and chuck threads loose. See section 2.13

2. Lay hammer on a bench, mark the sleeve ends "backhead" and "chuck"

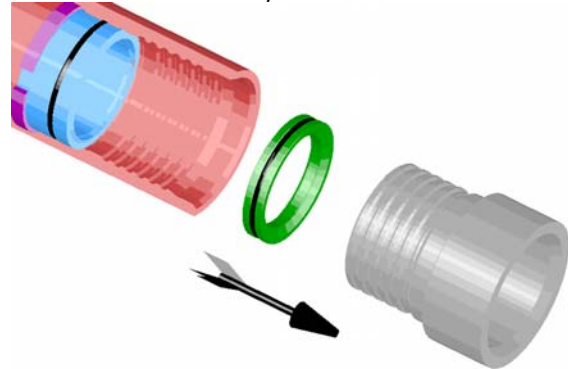
3. Turn out the backhead, lift out the check valve, check valve spring and disc spring pack.



4. If the disc springs look dry and/or rusty, pull the disc spring pack apart. The guide ring is held inside the spacer tube by an o-ring. Hold the spacer tube and tap the guide ring out, remove the o-ring, slide the disc springs off the ring.

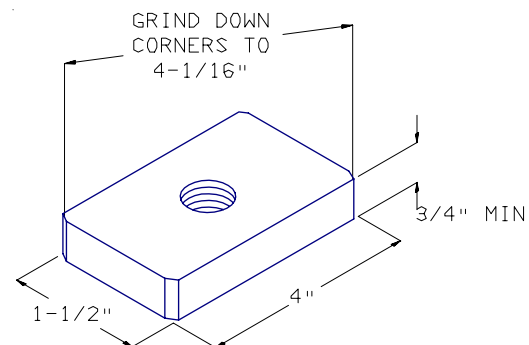


5. Turn out the chuck, lift out the bit retainer ring



6. Removing the bearing

a. Prepare a bump-out hammer from these parts:
+Block- $\frac{3}{4}$ min x 1-1/2 x 4" x 4-1/16 across corners, with a threaded center hole,



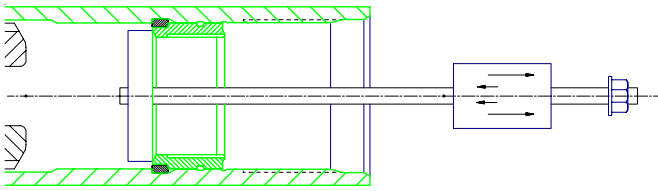
+threaded rod 24" long, nut, washer, and a slide hammer that will fit over the rod.

OR

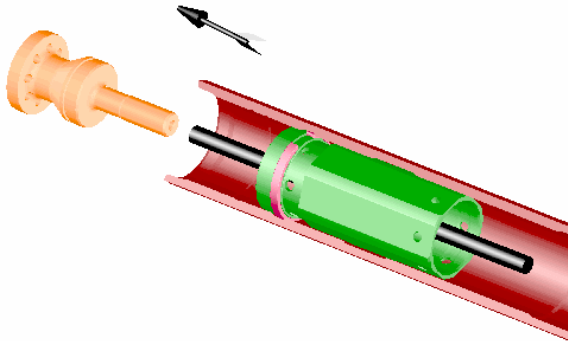
use Rock Hog tool #45409. This kit is sold separately. Contact your Rock Hog representative for availability.

b. Pull out the bearing. An o-ring around the bearing is all that holds the bearing in. To use the

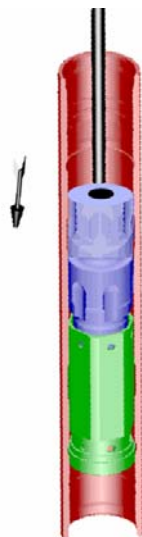
bump-out hammer, place the block behind the bearing on top of the piston, thread the rod into the block. Put the slide hammer, washer, and nut on the rod and pull the block up against the bearing. Keeping the block centered on the bearing, bump the bearing out of the wear sleeve.



7. Drive out the air distributor from the chuck end with a steel rod or pipe (1-1/8" max dia x 30" min long). run the rod through the piston to push out the air distributor.

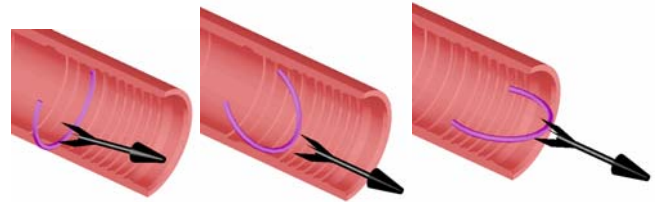


8. Remove the cylinder and piston. Stand the sleeve on the backhead end. The piston will drop against the cylinder. Using a rod, pipe, or timber (3-1/2 dia x 40" long) and a sledge hammer, or just a heavy bar (Rock Hog uses a 2-1/2" dia x 5' long steel bar), drive on the piston. This will collapse the ring out of its groove and allow the cylinder and piston to move to the bottom of the sleeve. Lay the sleeve over and push the cylinder/piston out of the sleeve.



9. Removing the bearing retaining ring. This ring does not need removed unless the wear sleeve needs flipped over, the ring is damaged, or the sleeve is being replaced. This ring will pull out by hand but you may need to use a hook to pull it out of the groove if you can't move it with your hand.

Pull on the center of the ring. Once it comes out of the groove continue to pull until it comes out of the sleeve. It is normal for the ring to be tight coming past the sleeve threads.



Disassembly is complete.

3.3 Inspection

Before cleaning any parts, observe them for oil. If the hammer is being properly lubricated, the parts should have a substantial film of oil all over but not dripping.

None of the following should be found inside:
dirt and grit
metal shavings
grease (other than at the chuck & backhead)
rust and corrosion

Clean all parts. Carefully look over all parts for cracks, corrosion, and pitting. Any corrosion indicates the hammer is not being oiled properly. Corrosion greatly increases the chance of cracks starting. Remove any and all corrosion using fine emery paper.

Galling- is surface damage caused by metal-to-metal contact under high loads. Many of the parts listed will be checked for galling. Any sign of galling indicates lack of lubrication, use of the wrong type of lubricant, or parts have been damaged to the extent there is interference between parts.

The clearance checks given below are what Rock Hog considers as the limit of wear for those parts. Past this point, the hammer performance will no longer be satisfactory. The clearance may be checked using feeler gages or measuring both parts with micrometers.

These clearances may or may not be acceptable for your given application. With so many variables (air supply, rig settings, rock

Pacific Bit of Canada Inc.

Unit 204, 9485 – 189 Street, Surrey, B.C. V4N 5L8
 Phone 604 513 4292 • Toll Free 1 877 511 4292
 Fax 604 513 4291 • Website www.pacific-bit.com

formation, etc) affecting hammer performance, only the operator can say when hammer performance has dropped below an acceptable level. Again, keeping a log of when & what service was performed will help fine-tune the service schedule to fit your operation.

Backhead: be sure to remove all the old grease from the drill pipe connection threads. Moisture can get trapped under the grease and corrode the surface. This also allows for a visual check of wear on the threads. Compare the worn threads to a new thread. If 50% of the thread form is worn away, replace the backhead.

Check the condition of the o-ring. If it is cracked, cut, or brittle, replace it.

Check the large threads for galling. Polish out any damaged areas.

The outside of the backhead will wear away. This wear is not detrimental to the function of the hammer but will eventually allow the drill pipe to wear away. Replace the backhead if it is no longer protecting the drill pipe.

Check Valve: check the condition of the rubber top. If the surface is degraded, replace the check valve. If the clearance with the air distributor bore is greater than .009" (.23mm), replace the check valve.

Check Valve Spring: the outside of the spring will be worn on one side about mid-length. If the wire diameter has been reduced by more than 30%, replace the spring.

Discs Spring Pack: Replace any parts that are cracked or damaged. In this case, the o-ring is not a seal but a retainer. Replace the o-ring if it no longer holds the pack together. If there is any rust on the disc springs, remove all the rust and put a coat of oil on the springs. Look for wear on the faces of the ring, spacer, and springs. As the faces wear, there is less compression force created by the springs. This compression is set by the compression gap described in section 3.4-step 11.

Air Distributor: make sure all the air holes are clear. Check the clearance of the stem end with the back bore in the piston. If it exceeds .009" (.23mm) replace the air distributor.

Check the condition of the o-ring. If it is cracked, cut, or brittle, replace it.

Cylinder: check the inside bore for galling with the piston. Polish out any surface damage.

Check the clearance of the bore with the top diameter of the piston. If it exceeds .009" (.23mm), replace the cylinder. Check the new cylinder to the used piston. If the clearance exceeds .006" (.15mm), replace the piston also.

Check the faces on the retaining ring in the outside groove. If the faces have a heavy step worn in them, cut off the ring and put on a new ring.

Piston: check the (2) outside guide diameters and top bore for galling and burning. Polish out any minor damage found on the surfaces.

Any black areas on the surface indicate the piston was rubbing and over heating. Surface heating is very detrimental to the piston. In most cases, if the surface is black, that surface will also be covered with cracks. Replace the piston if it has excessive surface cracks.

If the wear sleeve has not been previously flipped, check the clearance of the piston's big diameter with the sleeve bore where the cylinder sits. If it exceeds .006" (.15mm), replace the piston. Check the new piston to the sleeve bore on the chuck end. If the clearance exceeds .006" (.15mm), flip the wear sleeve at assembly (note: normally sleeve external wear determines when the sleeve gets flipped).

If the sleeve has been previously flipped, check the clearance of the big diameter with the sleeve bore where the piston runs. If it exceeds .008" (.20mm), replace the sleeve. Check the piston to the new sleeve bore. If the clearance exceeds .006" (.15mm), replace the piston.

Check the strike face for chipping and pitting. Replace a piston with a badly damaged strike face.

Note: the face can be reconditioned by removing up to .04" (1mm) of material. Only a qualified machinist should do this. Reconditioned pistons are not covered under warranty.

Remove any nicks, dents, burrs with fine emery paper or a fine honing stone.

Again look over the piston for any rust, corrosion, pitting. All these will lead to cracks and failure of the piston.

Wear Sleeve: Check the outside diameter. The wear sleeve will normally wear more on the chuck end. When any location on the outside diameter has reached 5-5/8" (142mm), flip the sleeve. **Once any location has worn down to a 5-1/2" (139mm) diameter, replace the sleeve.**

Check the bore where the piston runs and the threads for galling. Polish out any surface damage.

Bearing: check the inside bore for galling. Polish out any damage.

Check the clearance of the bore with the guide diameter of the bit. If it exceeds .010" (.25mm), replace the bearing.

Chuck: check the large threads for galling. Polish out any damaged areas.

Check the splines. The driving side will wear away. If the form of the driving side still matches the bit, the chuck is usable. If the form no longer matches the bit or more than 1/2 the spline thickness is worn away, replace the chuck.

Check the outside diameter for wear. If the wall thickness on the bit shoulder end measures 5/16" (8mm) or less at any point, replaced the chuck.

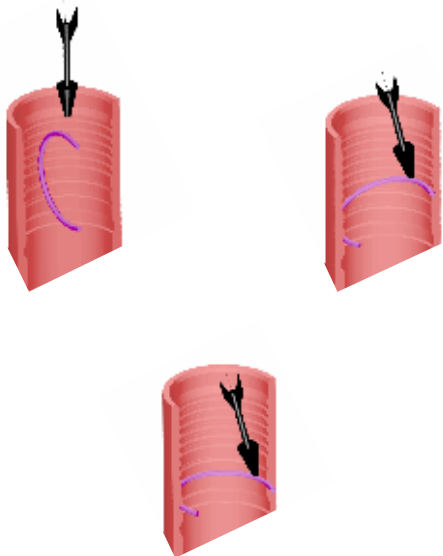
Breakout Washers: These copper washers are on the hammer when shipped. One between the backhead and sleeve, and one between the chuck and sleeve. The washers are optional but they do reduce the torque required to break the threads loose. These rings do disintegrate over time. During inspection there may be just a portion of the ring remaining or no ring at all.

3.4 Assembly

Any basic tools needed, will be described as needed.

1. Make sure all parts are clean. Wash and wipe off and/or blow out any dirt. DIRT IN THE HAMMER WILL CAUSE THE PISTON TO STICK. Apply a light coat of oil to all internal parts.

2. As determined from the inspection process, start with the chuck end. With the sleeve standing on the backhead end, install the bearing ring if needed. Put the ring down into the sleeve. insert one side of the ring into the groove located 6-1/2" (165mm) in. Push the other side of the ring down against the sleeve then using a rod, tap the high side of the ring down until it snaps into the groove.

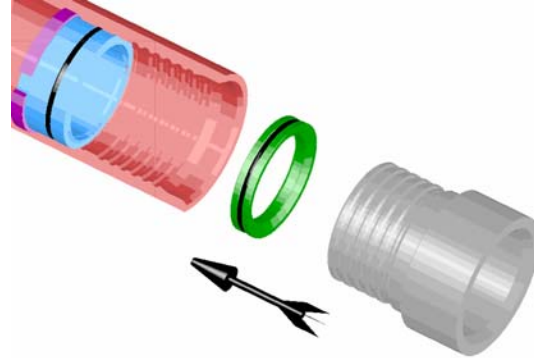


3. Install bearing.

First apply some oil or grease to the o-ring to help it slide in. The bearing goes in with the smallest inside diameter toward the sleeve. Push the bearing in by hand as far as possible. Set the cylinder on top of the bearing. The bearing is a slip fit. The only resistance to it going in is the drag of the o-ring. Tap bearing in until it comes to a hard stop on the retainer ring. Pull out the cylinder.

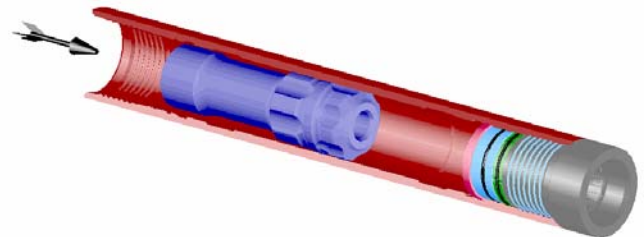


4. Set in the bit retainer ring. If used, put the breakout washer on the chuck and thread in the chuck. The chuck should seat up on the sleeve. If there is a gap, parts are out of place. Find the cause of the gap and correct it.



The bottom end is complete.

5. Apply film of oil to piston. Lay the sleeve horizontal and push piston, large end first, into the backhead end of the sleeve. The piston will hang up some as it passes the grooves but should then slide free to the bearing. If the piston does not slide free between the grooves, remove it and determine what is holding it up.

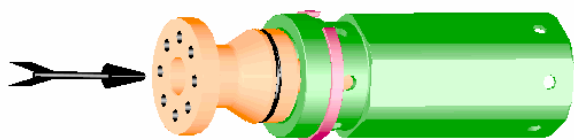


6. Apply film of oil or grease to the air distributor o-ring. Set the air distributor on top of the cylinder (the

Pacific Bit of Canada Inc.

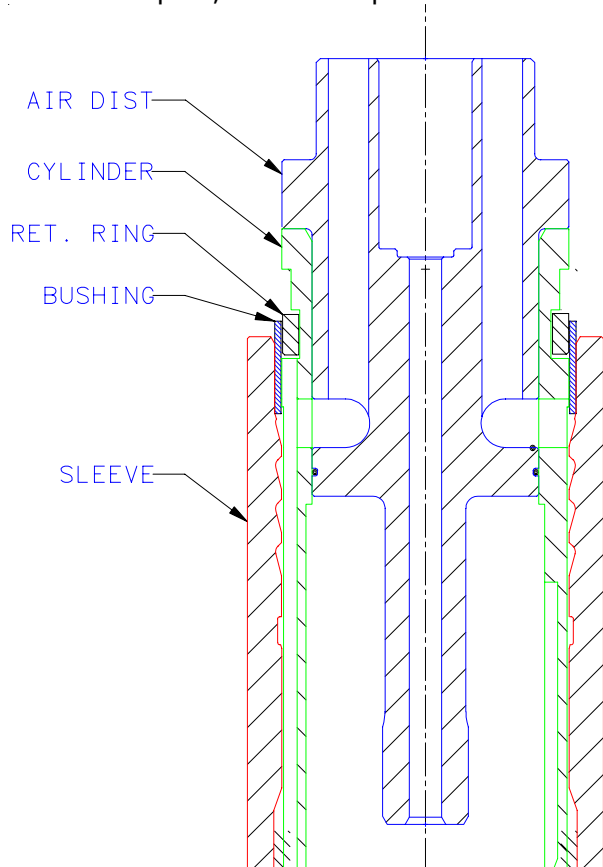
Unit 204, 9485 – 189 Street, Surrey, B.C. V4N 5L8
Phone 604 513 4292 • Toll Free 1 877 511 4292
Fax 604 513 4291 • Website www.pacific-bit.com

retaining ring is toward the air distributor). Tap air distributor into cylinder.



7A. Installing the cylinder & air distributor without Rock Hog tool #45415. Wrap-around chain vise pliers and a simple metal bushing 4.970/4.965 OD x 4.770/4.775 ID x 1" long, are needed for this procedure.

- a. Use the chain pliers to collapse the retaining ring into the deepest groove in the cylinder.
- b. Stand the sleeve up on the chuck on a solid surface. Set the bushing into the front bore of the sleeve.
- c. Set the cylinder into the sleeve. With the ring collapsed, it will start into the bushing. Tap the cylinder in until the bushing will keep the ring collapsed, remove the pliers.



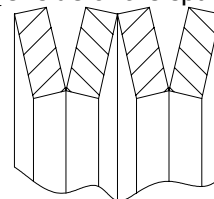
- d. Drive the air distributor/cylinder into the sleeve. The ring will only seat into the correct location

so drive the cylinder in until it comes to a hard stop. The top of the air dist will be below the sleeve 5.43" (138mm).

- e. Remove the bushing from the sleeve.

7B. Installing the cylinder can also be done using Rock Hog tool #45415. This kit is sold separately and comes complete with instructions. Contact your Rock Hog representative for availability.

8. Put the spring pack together. The disc springs must be stacked as shown here. Grease the springs. Slide the springs over the guide, put the o-ring in the groove, tap the guide into either side of the spacer.

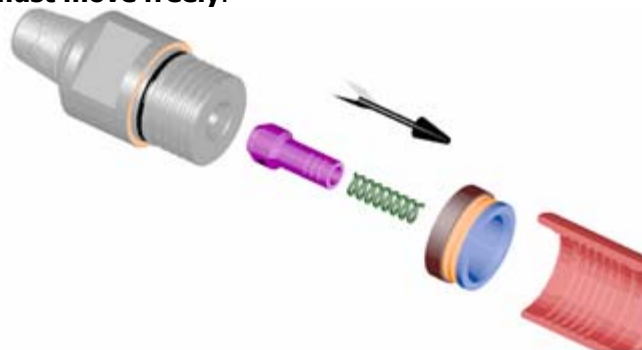


DISC SPRING STACK



Set disc spring pack on top of the air distributor. The pack be installed in either direction.

9. Set the check valve spring, then the check valve into the air distributor center hole. Push check valve all the way down, the spring should push it back. **The valve must move freely.**



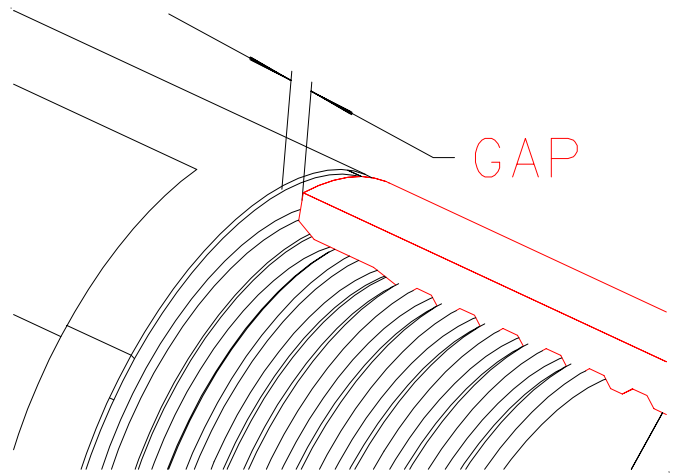
11. Check the backhead compression gap. This gap is critical for keeping the internal parts tight.

With the o-ring and breakout washer off of the backhead, thread the backhead into the sleeve until it is **hand-tight**.

Measure the gap between the backhead shoulder & sleeve face. If it is greater than .24" (6.0mm), a part is out of position. If it is less than .08" (2.0 mm), perform one of the following:

- a. Purchase and install Rock Hog part #943028 between the spring pack and air distributor
- b. Obtain and install a steel washer (4.65 OD x 3.80 ID x .090 THK) between the spring pack and air distributor

If the gap is less than .08 and a make-up washer is already in the hammer, replace the disc springs. Then check the condition of the cylinder retaining ring and the shoulders the ring sets on. Replace any worn parts. Assemble the hammer without the make-up washer, and check the gap. If the gap is still less than .08, put (1) new make-up washer back in.

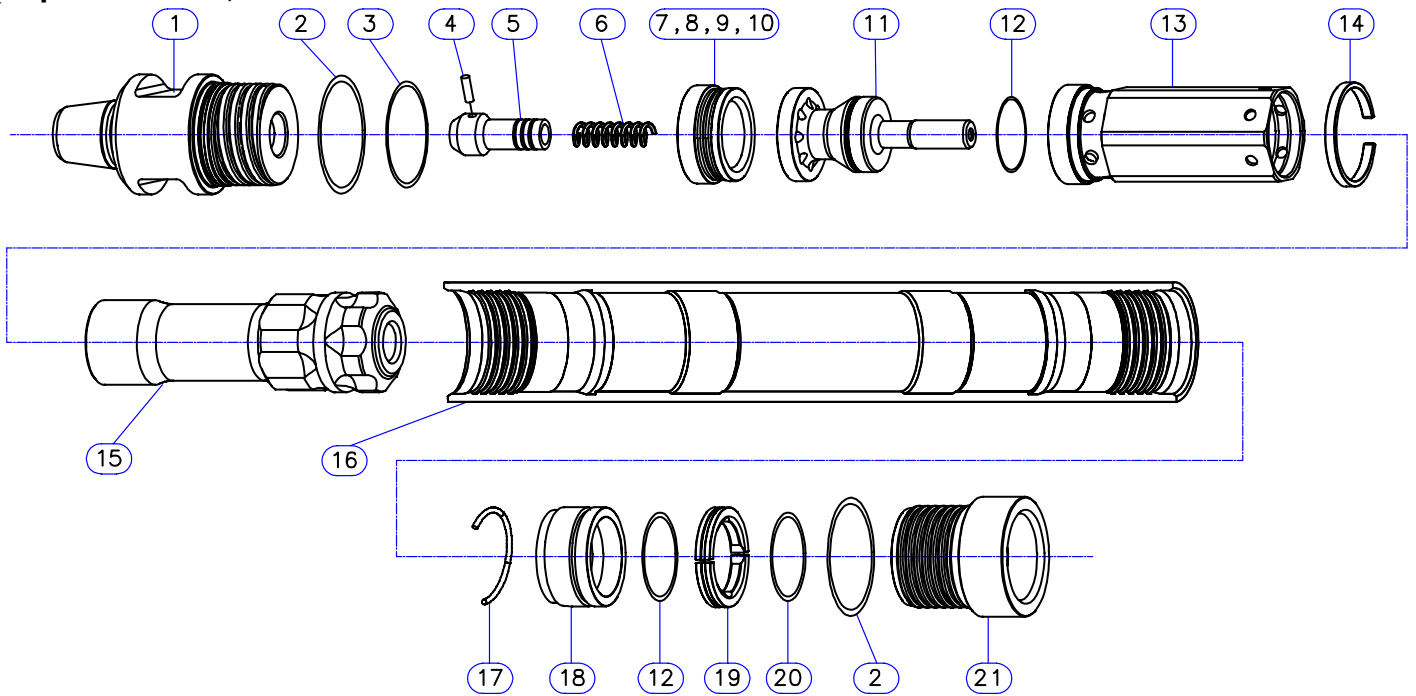


12. Once the gap is correct, remove the backhead, put the breakout washer on if used and put the o-ring on. Apply thick coating of copper coat grease to the backhead wear sleeve threads. Turn the backhead into the sleeve until hand tight. If available, put a thread protector cap on the drill pipe thread.

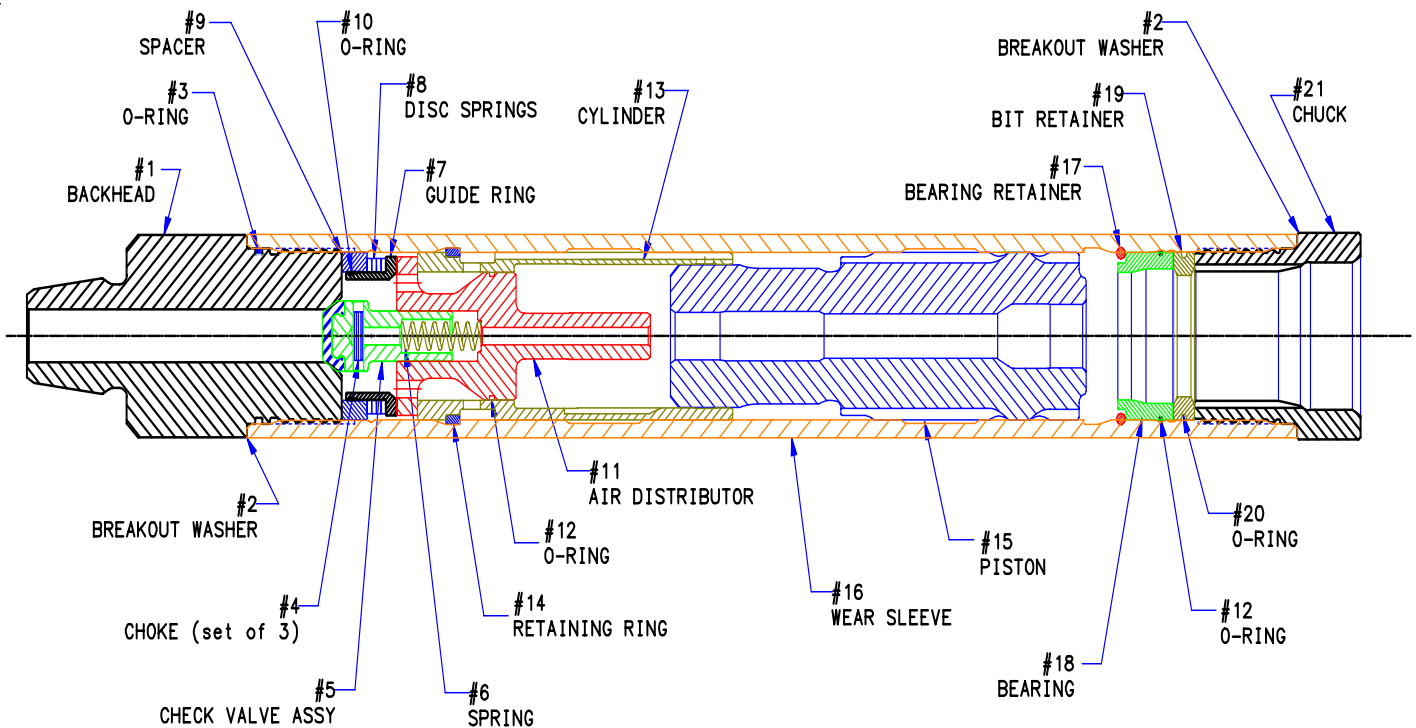
Assembly is complete.

Section 4. Parts Breakdown

Exploded View, model RH65Q1HP



Assembled View



Pacific Bit of Canada Inc.

Unit 204, 9485 – 189 Street, Surrey, B.C. V4N 5L8
 Phone 604 513 4292 • Toll Free 1 877 511 4292
 Fax 604 513 4291 • Website www.pacific-bit.com

Part List

Shown at the right side of the chart is the quantity of spare parts that should be kept on hand. Level 1 is for water well drilling, Level 3 is for high production drilling.

Model RH65Q1HP & RH65QHD1HP

ITEM No	PART No	QTY REQD	PART NAME	WEIGHT		SPARE PARTS ON HAND		
				LBS	KGS	LEVEL 1	LEVEL 2	LEVEL 3
1	062RH651	1	BACKHEAD	46.5	21.14	-	-	1
	062RH651HD		BACKHEAD, HEAVY DUTY	47.5	21.59			
2	943027	2	WASHER, BREAKOUT	0.03		-	2	4
3	560347	1	O-RING, BACKHEAD	0.01		1	2	4
4	1103810	1	CHOKE SET, SET OF 3	0.01		-	-	-
5	922RH6	1	CHECK VALVE, WITH SEAL CAP	0.58	0.26	-	-	1
6	798010	1	SPRING, CHK VAL	0.3	0.14	-	1	2
7	695014	1	GUIDE RING	1.65	0.75	-	-	-
8	799010	4	DISC SPRING	0.25	0.11	-	-	4
9	792014	1	SPACER TUBE	1.64	0.75	-	-	-
10	560152	1	O-RING, GUIDE RING	0.01		-	1	2
11	201RH65	1	AIR DISTRIBUTOR	10.5	4.77	-	-	1
12	560235	2	O-RING, AIR DIST. & BEARING	0.01		2	4	6
13	188RH65	1	CYLINDER, COMES WITH RING 14 INSTALLED	6.70	3.05	-	1	2
14		1	RETAINING RING, COMES ON CYLINDER 13	0.48	0.22	-	-	-
15	605RH65Q2	1	PISTON	47.3	21.50	-	1	1
16	780RH65	1	WEAR SLEEVE	83.4	37.91	1	2	3
	780RH65HD		WEAR SLEEVE, HEAVY DUTY	98.2	44.64			
17	698053	1	RETAINING RING, BEARING	0.16	0.07	-	-	-
18	065RH65Q	1	BEARING	3.70	1.68	-	1	1
19	698048	1	RETAINING RING, QL6 BIT	1.49	0.68	-	1	1
20	560240	1	O-RING, BIT RETAINING RING	0.01		1	2	4
21	112RH65Q	1	CHUCK, QL6 BIT	14.7	6.68	2	4	6
	112RH65QHD		CHUCK, HEAVY DUTY, QL6 BIT	15.6	7.09			
THE FOLLOWING PARTS ARE SOLD SEPARATE								
-	350010		ROCK HOG THREAD GREASE					
-	45415		CYLINDER INSTALL KIT					
-	943028		MAKEUP WASHER					1

Pacific Bit of Canada Inc.

Unit 204, 9485 – 189 Street, Surrey, B.C. V4N 5L8

Phone 604 513 4292 • Toll Free 1 877 511 4292

Fax 604 513 4291 • Website www.pacific-bit.com

Section 5. Trouble Shooting

These are typical problems that can develop after the hammer has been in service:

Possible Causes

Piston will not cycle

1. Piston stuck in sleeve due to
 - a. Sleeve was pinched shut with wrench when threads were being loosened/tightened
 - b. Foreign material entered through drill string and jammed piston
 - c. Mud backed up into hammer (drilling under water), inspect the check valve
2. An internal part failed

Slow penetration, pressure ok

1. Dull or broken buttons on bit
2. Incorrect drill rotation or down pressure for the formation being drilled
3. Harder rock formation than the normal

Low pressure

1. Leak in the air line
2. Leak in the hammer (cracked or broken part)
3. Compressor output problem

High pressure

1. Air line is partially closed off
2. Foreign material clogging air passages in hammer
3. Bit blow holes are clogged

Pacific Bit of Canada Inc.

Unit 204, 9485 – 189 Street, Surrey, B.C. V4N 5L8

Phone 604 513 4292 • Toll Free 1 877 511 4292

Fax 604 513 4291 • Website www.pacific-bit.com